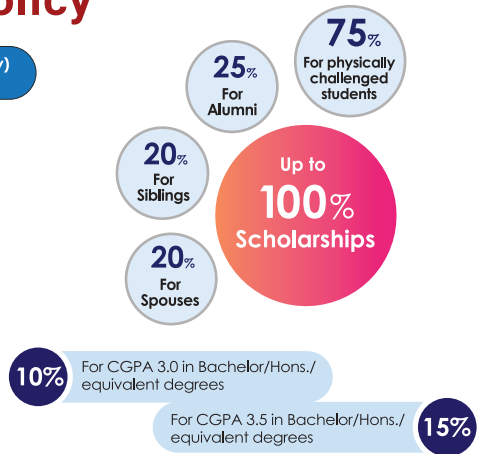
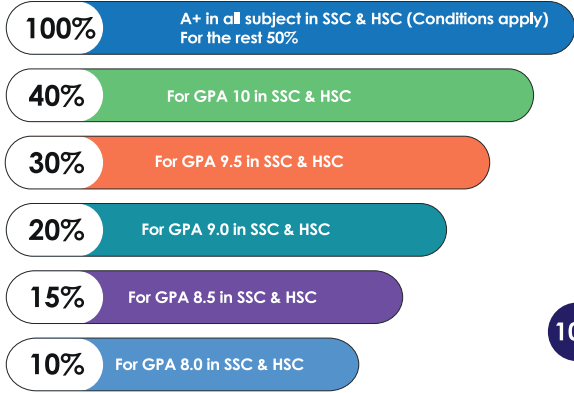


Scholarship & Waiver Policy



- ✔ Sufi Mizanur Rahman Foundation Scholarship Fund (For meritorious students suffering from financial hardship)
- ✔ Hon'ble Chairman/BoT/Vice Chancellor's Scholarship

- ✔ Ratnagarbha Tahmina Rahman Scholarship Fund (Based on semester results)
- * Terms and conditions apply

Opportunities

- ✔ Credit Transfer to local and foreign universities.
- ✔ Collaboration with international universities.
- ✔ On-campus Job opportunities.
- ✔ Two/Three days classes (including Friday) for MSS.

Facilities

- ✔ Field practice in Govt. agencies and NGO's for Social Work students.
- ✔ Credit wave for Transfer students.
- ✔ Fast-growing Library.
- ✔ Computer Laboratories.
- ✔ Study tour on home and abroad.
- ✔ IT help desk.
- ✔ Student Clubs, Societies, etc.



DEPARTMENT OF SOCIAL WORK

- BSS IN SOCIAL WORK
- MSS IN SOCIAL WORK



Social Work Program at UITS

The Department of Social Work is a multi-disciplinary academic field committed to improving the wellbeing of individuals, families and communities, and addressing inequalities and discrimination. Through teaching, research and service, the Department promotes social, economic and environmental justice. There are two programs running under the auspices of Department of Social Work. They are: BSS (Bachelor of Social Sciences in Social Work) and MSS (Master of Social Sciences in Social Work).

Mission and Vision of the Program

The mission and vision of studying social work is to make social engineer who will enhance human well-being and meet the basic human needs of the people with particular attention to the people who are physically and mentally vulnerable, oppressed, and living in poverty.

Program Objectives

The social work program will prepare students;

- ✔ To be able to work as entry-level generalist practitioners with individuals, families, groups, and communities.
- ✔ To advocate for the disenfranchised, oppressed, underrepresented and non-dominant groups through practice and policy.
- ✔ To explore the interrelationships among people and systems as related to generalist social work practice.

Academic Year for BSS and MSS Programs

Each academic year is divided into 2 semesters Spring (March-August) and Autumn (September-February). Classes are held within 20 weeks of a semester and 2 weeks are allocated for Mid Term and Final Examinations.

UNIVERSITY OF INFORMATION TECHNOLOGY & SCIENCES

Permanent Campus: Holding 190, Road 5, Block J, Baridhara, Maddha Nayanagar, Vatara, Dhaka-1212

☎ 09678-008487 ☎ 01713-487709, 01939-915209, 01914-240649, 01844-043870

🌐 www.uits.edu.bd ✉ admission@uits.edu.bd 📺 www.facebook.com/theuits

ONLINE ADMISSION



Scan QR Code



UITS

Future will be better than thy past

An initiative of PHP Family

Curriculum Structure

BSS in Social Work	
General Education	15 Credits
Program Core	112 Credits
Field Practicum (480 Hours)	4 Credits
Viva Voce	4 Credits
Total	135 Credits

MSS in Social Work	
Program Core	18 Credits
Field Practicum (480 Hours)	4 Credits
Thesis (to be offered to the selected number of students)/ Optional Course	6 Credits
Viva Voce (Theoretical Courses and Field Practicum)	2 Credits
Total	30 Credits

Admission Eligibility (BSS in Social Work)

- According to the UGC rules, applicants must have at least 2nd Division or GPA 2.5 in both SSC and HSC (or equivalent). If there is any GPA 2.00 in SSC/HSC (or equivalent) then the total GPA must have to be GPA 6.00.
- For O level & A level, at least for 5 subjects in O level and 2 subjects in A level, the applicants must have GPA 4.00 or B Grade in 4 subjects & GPA 3.5/C Grade in other 3 subjects.
- For Freedom Fighters children the total GPA may be considered as 5.00.

Admission Eligibility (MSS in Social Work)

Masters in Social Work is a one-year program and the students who successfully complete the BSS Honors in Social Work / Sociology / Economics / Political Sciences / International Relations / Anthropology / Public Administrations / Population Sciences / Development Studies / Women and Gender Studies / Criminology / Political Sciences and Psychology are eligible for enrollment in this program.

Total Cost

Admission Fees (One time)

Application Form	500
Admission Fee	10,000
Student Welfare	200

Other Fees (Per Semester): 4,250

Including Library Fee, Laboratory Fee, Transport Fee and Co-curriculum Fee.

For BSS Program

Tuition Fee (per credit)	1,800
Total Tuition Fees (135 Credits)	2,43,000
Total Program Cost:	2,87,700

For MSS Program

Tuition Fee (per credit)	2,000
Total Tuition Fees (30 Credits)	60,000
Total Program Cost:	79,200



Study Tour, 2022



Inter department Football tournament 2021

BSS in Social Work

1st Semester (15 Credits)		
Code	Course Title	Cr.
SW 101	Introduction to Social Work	3.0
SW 103	History and Philosophy of Social Welfare	3.0
SW 105	Introduction to Sociology	3.0
GED 101	English Language	3.0
GED 105	Bangladesh Studies	3.0

2nd Semester (19 Credits)		
SW 107	Micro Practice of Social Work Methods	3.0
SW 109	Political Science for Social Workers	3.0
SW 111	Introduction to Economics	3.0
GED 117	Bengali Language	3.0
GED 109	Ethics: Theory and Practice or	3.0
GED 111	Computer Fundamentals	3.0
GED 119	History of Emergence of Bangladesh	3.0
SW 110	Viva Voce	1.0

3rd Semester (18 Credits)		
SW 201	Mezzo Practice of Social Work Methods	3.0
SW 203	Social Problems Analysis	3.0
SW 205	Principles of Management	3.0
SW 207	Statistics for Social Sciences I	3.0
SW 209	Social Action & Reform	3.0
SW 211	Social Legislation	3.0

4th Semester (19 Credits)		
SW 213	Macro Practice of Social Work Methods	3.0
SW 215	Disaster Management and Social Work	3.0
SW 217	Social Policy and Program Planning	3.0
SW 219	Social Psychology and Human Behavior	3.0
SW 221	Statistics for Social Sciences II	3.0
SW 223	Human Biology	3.0
SW 210	Viva Voce	1.0

5th Semester (18 Credits)		
SW 301	Theory in Social Work Practice	3.0
SW 303	Human Behavior and the Social Environment	3.0
SW 305	Social Research (Qualitative Approach)	3.0
SW 307	Criminal and Social Justice	3.0
SW 309	Social and Cultural Anthropology	3.0
SW 311	Counseling and Social Work	3.0

6th Semester (16 Credits)		
SW 313	Voluntarism and NGOs in Bangladesh	3.0
SW 315	Gender Issues and Women Development	3.0
SW 317	Social Welfare Administration	3.0
SW 319	Social Research (Quantitative Approach)	3.0
SW 310	Viva Voce	1.0
One elective course from either group I or II or III		

7th Semester (18 Credits)		
SW 401	Globalization and International Social Work	3.0
SW 403	Social Work Field Education	3.0
Four elective courses from either group I or II or III		

8th Semester (12 Credits)		
SW 405	Seminar	3.0
SW 400	Field Practicum (480 Hours)	4.0
SW 417	Comprehensive	4.0
SW 410	Viva Voce	1.0

Elective Courses in the field of Specialization: Group I or II or III

Group I – Gerontology Studies (Total 15 Cr.)		
Code	Course Title	Cr.
SW 407	Gerontological Social Work	3.0
SW 409	Death and Dying	3.0
SW 411	Health Management for Elderly	3.0
SW 413	Public Policy and Aging	3.0
SW 415	Adult Development and Aging	3.0

Group II – Developmental Studies (Total 15 Cr.)		
Code	Course Title	Cr.
SW 419	Child and Youth Development	3.0
SW 421	Social Change and Development	3.0
SW 423	Urban Planning, Development and Management	3.0
SW 425	Governance and Development in Bangladesh	3.0
SW 427	Rural Development of Bangladesh	3.0

Group III – Leadership and Management Studies (Total 15 Cr.)		
Code	Course Title	Cr.
SW 429	Organizational Behavior	3.0
SW 431	Strategic Management	3.0
SW 433	Management Information System	3.0
SW 435	Human Resources Management	3.0
SW 437	Project Management	3.0

MSS in Social Work

1st Semester (15 Credits)		
Code	Course Title	Cr.
MSW 501	Social Work Approaches and Practice	3.0
MSW 503	Social Development	3.0
MSW 505	Social Organization Management	3.0
MSW 507	Advanced Social Research	3.0
MSW 509	Guidance and Counseling in Social Work	3.0

2nd Semester (16 Credits)			
Any one pair of the following (pair 1 only for thesis group students)			
Code	Course Title	Cr.	
MSW 500	Field Practicum (480 Hours)	4.0	
MSW 511	Corrections and Correctional Services	3.0	
Pair-1	MSW 510	Thesis (to be offered to the selected students)	4.0
Pair-2	MSW 512	Viva-voce on Thesis	2.0
Pair-3	MSW 513	Clinical Social Work	3.0
MSW 515	Gerontological Social Work	3.0	
MSW 517	Industrial Relations and Labor Laws	3.0	
MSW 519	Environmental Issues and Sustainable Dev.	3.0	
MSW 520	Viva Voce (Theoretical Courses and Field Practicum)	2.0	